



ORBEA



SMITH **CST**
TYRES



RYFE

NSW Gravity Series Round 2

Updated Technical Guide



The Event



**ORBEA****SMITH CST TYRES****RYFE**

The event is round 2 of the NSW Gravity Series and round 1 of the NSW Down Hill Series. The event will be held entirely at UC Stromlo Forest Park in Canberra.

Key Contacts and officials

Name	Position/Title	Phone	Email
Jeff Hughes	Event Director	0427 885 112	dh@corc.asn.au
Chris Clarke	AusCycling ACT	0418 656 809	chris.clarke@auscycling.org.au
Nick Haertsch	Series Converter	0414 750 687	
Darryl Crame	Chief Commissaire	0404008758	
Ivan Herman	Series Commissaire	0416878901	
Nick Haertsch	Event Timing	0414 750 687	
Shuttle Service	Dynamic Motivation		Stromlo Bus Shuttles (dynamicmotivation.com.au)
Get First Aid	First Aid Provider Team Lead Alison	0488949489	Get First Aid Event Medical Australia

Social Media

[NSW State Gravity Series 2025 | Facebook](#)

Registration

[AusCycling Event Portal](#)

NSW Downhill \$200 to \$220 per entry included.

- Practice Shuttle service Saturday and Sunday
- Racing Shuttle service Sunday
- Racing Sunday
- Presentations Sunday

Registration Closes Sunday 15th June if not sold out prior. Entry limit 300 total.

Event Schedule

Sunday 15th June at 11:00 pm entries close

Monday 16th June, entry listed published.

Wednesday 18th June, the start list published for optional seeding run Saturday U17, U19, Elite categories. Start list published for all other categories for Sunday racing.





ORBEA



Friday 20th June

- 4:00pm to 5:30pm Registration at the Handlebar

Saturday 21st June

- 8:00 am to 12:00 noon Registration
- **9:30 am to 2:30 pm Down Hill Practice Shuttles (Dynamic Motivation)**
- 12:00 to 3:00 Transponder allocation U17, U19 and Elite categories only
- **2:30 pm to 3:30 pm Down Hill Optional timed seeding Shuttles (Dynamic Motivation)**
- 3:00 pm to 4:30 pm Optional timed seeding run to determine Sunday race start order U17, U19 and Elite categories only.

Sunday 22nd June

- Official start list published for all racing
- 8:00 am to 9:00 am Registration
- 8:00 to 10:30 Transponder allocation
- **8:30 am to 12:00 noon Down Hill Practice Shuttles (Dynamic Motivation)**
- **12:00 noon to 3:00 Down Hill Racing Shuttles (Dynamic Motivation)**
- 12:30 pm to 3:30 pm Downhill Racing
- 4:00 pm Presentations

Regulations

This event will be run under the listed regulations.

NSW Gravity Series 2024 Downhill Series Regulations

[AusCycling Event Portal](#)

AusCycling Mountain Bike Regulations

[Technical Regulations](#) | [Event Organisers](#) | [AusCycling](#) | [AusCycling](#)

No self-shuttling is allowed. Any riders found self-shuttle will be excluded from the event.

Event Timing

The event will be timed using the Mobii System. Transponders will be issued to competitors at the registration tent as per the above schedule. Transponders need to be affixed to the bike as follows.





ORBEA



SMITH **CST**
TYRES



RYFE

Font fork on the non-brake side as low as possible and in a way that does not allow the transponder to move.



Transponders must be returned at the end of the competition. Any rider failing to return their transponder will be issued a fine and not allowed to compete in further series events until the transponder is returned.

First Aid

Professional event medical service will be provided by Get First Aid at the event.

The nearest Hospital Emergency department is at The Canberra Hospital – Yamba Drive Garren ACT 2605

The Weston Creek Walk-in Centre is available between 7:30 am and 10:00 pm at 24 Parkinson Street Weston ACT 2611

Walk-in Centres (WiC) can help with:

- colds, flu
- fractures (broken bones)
- infections
- cuts and sprains
- bites and stings

Camping

No Camping will be available at this event at Stromlo Forest Park

Camping is available at Cotter Reserve if required.

[Where to stay - Parks ACT](#)





ORBEA



SMITH **CST**
TYRES



RYFE

Water

Water is available numerous places at the venue.

Toilets and Showers

Toilets and showers are available in the lower level of the Stromlo pavilion.

Bike Wash

There is a bike wash facility at the shuttle uplift pickup point.

Parking

Parking at Stromlo is now pay parking.

Pay Parking Monday to Sunday 6 am to 9 pm

\$3.90 = 6 hours plus

[Parking at UC Stromlo - Stromlo Forest Park \(act.gov.au\)](http://act.gov.au)

Event Uplift (Shuttle) Service

All event uplift services will be provided by Dynamic Motivation.

No self-shuttling is allowed. Any riders found self-shuttle will be excluded from the event.

[Stromlo Bus Shuttles \(dynamicmotivation.com.au\)](http://dynamicmotivation.com.au)

Event Photography

The official event photographer is Outer Image Collective

[Home - Outer Image Collective](http://outerimagecollective.com)

Courses

The **downhill** course will be the 2013 National Championship course. Up the Anti into Carolines into Tripple Treat into Wallaby Run into DH Finish.

Any riders found modifying the course markings or course surface way be excluded from the event. If there is a problem, notify a marshal and the event crew will attend to it.

All course markings, taping, arrows, and safety signage has been placed for a reason.

There are B line options around all off the most difficult sections of track.





ORBEA

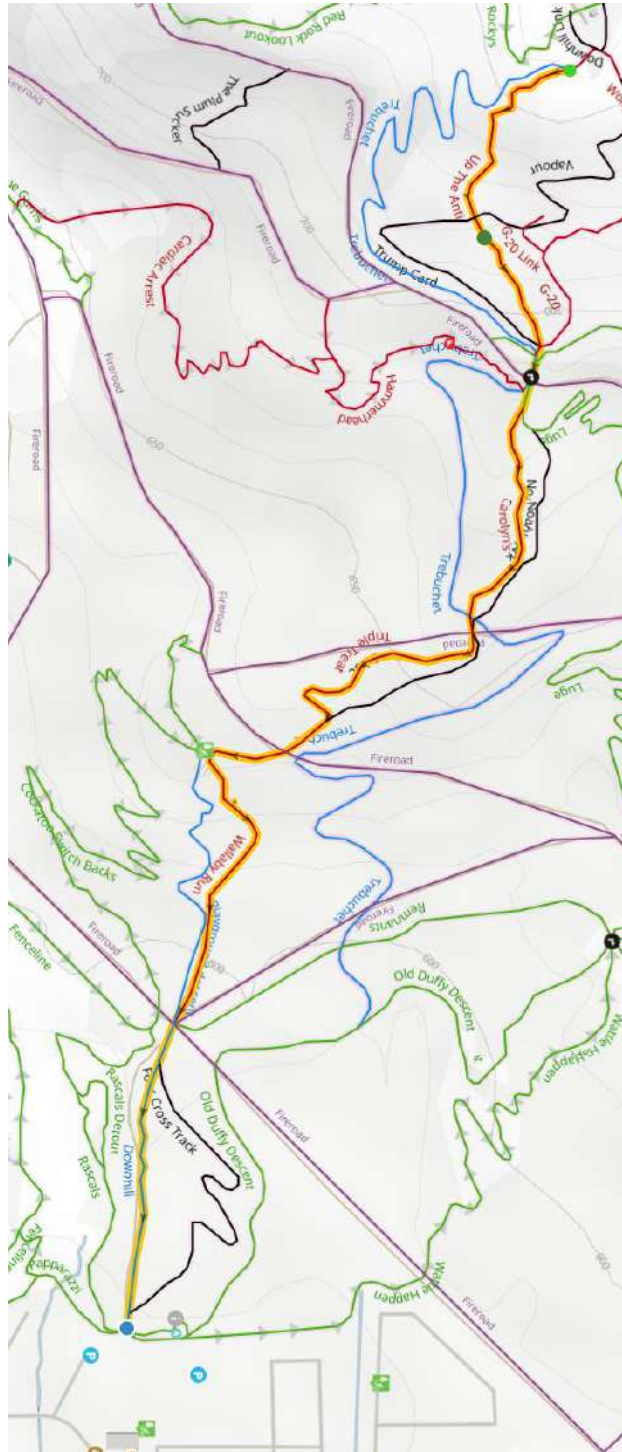


SMITH **CST** TYRES



RYFE

Course Map





ORBEA

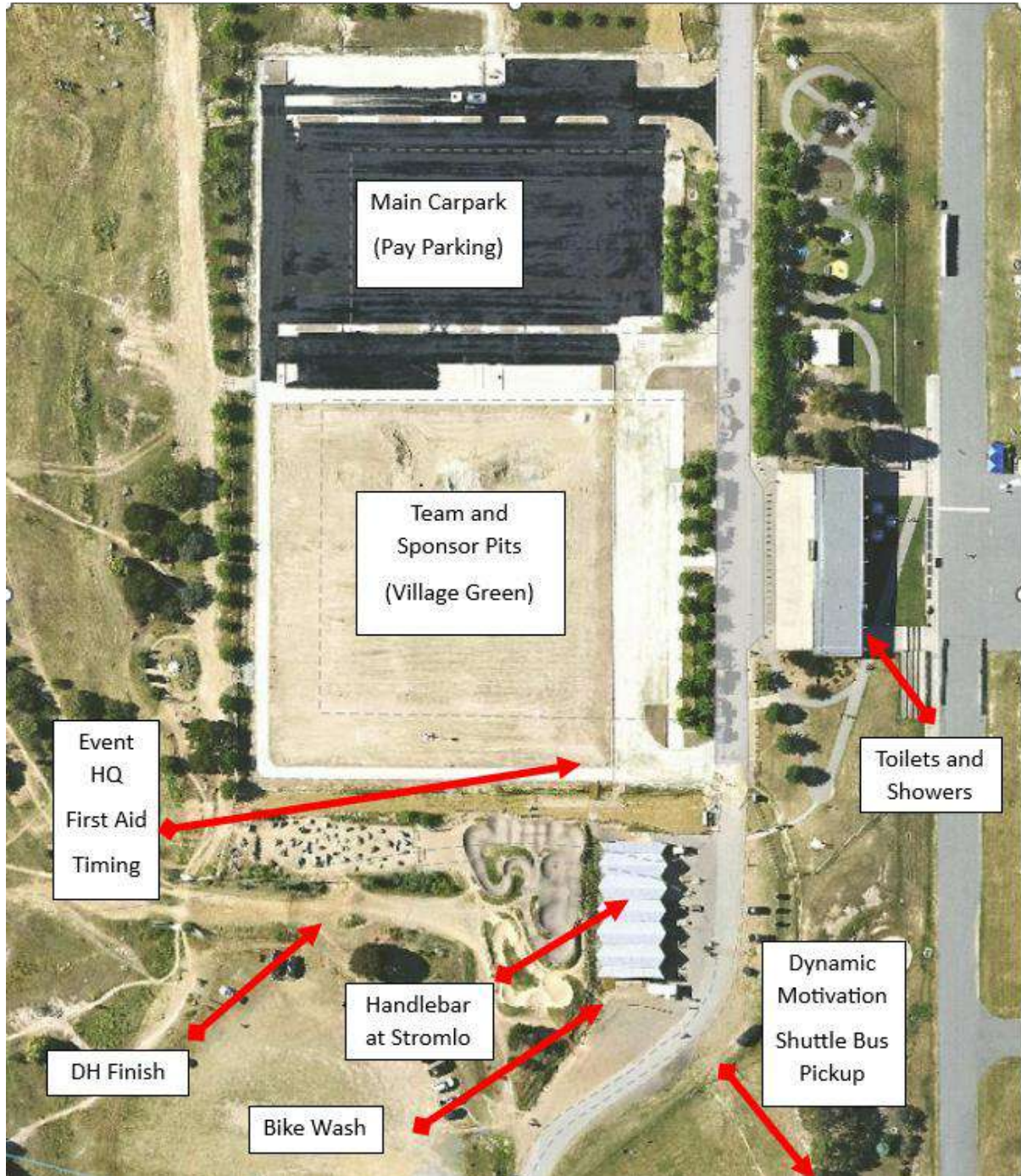


SMITH **CST** TYRES



RYFE

Village Map





ORBEA



SMITH **CST**
TYRES



RYFE

Series Web Site

[AusCycling Gravity Mountain Bike Series | NSW & ACT | AusCycling](#)

Future Series Events

2025 AusCycling NSW/ACT Gravity Series Rd 3 - July 26 & 27 – Orange - Enduro

2025 AusCycling NSW/ACT Gravity Series Rd 4 - August 23 & 24 – Green Valley - DH

2025 AusCycling NSW/ACT Gravity Series Rd 5 - September 13 & 14 - Ourimbah – Enduro

2025 AusCycling NSW/ACT Gravity Series Rd 6 – October 11 & 12 - AWABA- DH

